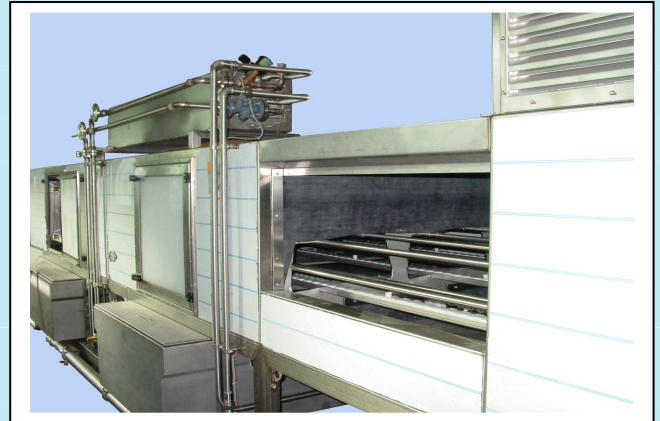
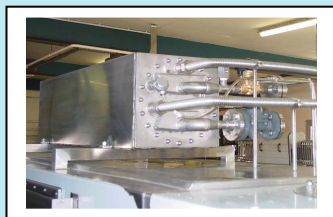


Traywasher TWT 3003-3-BT9



Technical specifications:

- Capacity: up to 3600 trays/hour in 3 lines
- Inlet zone: 1000 mm
- Prewash zone: 2800 mm with drumfilter
- Prewash pumps: 2x 11 kW, 2100 l/min, 3 bar
- Mainwash zone: 2800 mm
- Mainwash pumps: 2x15kW, 1500l/min, 5 bar
- Recirculated afterrinse: 1800 mm
- Afterrinse pump: 4,0 kW, 1000l/min, 2 bar
- All pumps: stainless steel
- Prewash tank: 2800 litre
- Mainwash tank: 1800 litre
- Afterrinse tank: 600 litre
- Watertemp. Prewash: 35°C
- Watertemp. mainwash: 55°C
- Watertemp. afterrinse: up to 85°C
- Blowing section: 3800 mm
- Outlet zone: 500 mm
- Siemens S7 PLC-control
- Blowing with 9 x 5,5 kW ventilators
- Ventilators are frequency controlled
- Machine Size: 13000x3000x2550 mm